



# The Lamplighter

2020 Spring Issue



*Lou Ann Wyer,  
President*

## Inside this issue:

President's Message	1
COVID 19	3
Coffee Chat	6
St Jude	8
Executive Board	10
New Members	17
Appointed Board	18
Chapters	28
Welcome to My Garden	39
Editor's Note	40
Forms	41

## President's Report

What a crazy month we all have had! With the cancellation of the VSC spring meeting and the VSC convention, COVID-19, and then the horrible storms this week, we have had a lot to deal with!

We are planning to hold a modified convention during our Leadership and Fall VSC weekend. At this time, we are hoping to hold the meeting in Richmond. More details about the venue will be forthcoming. There are lots of things that will be changing as a result and we don't have them all worked out yet.

We will be making modifications to reduce expenses and to hold both Leadership and convention in 1.5 days, a full day on Saturday and a half day on Sunday. A new Registration form and Ads form will be available once we confirm a venue and review

## Virginia State Council

*Founded Sept 19, 1953*

### **The purpose of the VA State Council is to:**

- **Promote closer relations and fuller cooperation between the local chapters, councils and Headquarters.**
- **Encourage friendship and fellowship through member and chapter association.**
- **Promote educational and leadership development among the members.**
- **Promote philanthropic and service endeavors.**
- **Promote interest in and growth of ESA throughout the state and internationally.**

<http://www.esa-virginia.com/>

<https://www.facebook.com/esavsc/>

<https://www.epsilonsigmaalpha.org>



## *President's Message Continued*

costs.

The current Executive Board members have agreed to remain in office until Brenda can determine a good transition date for her.

A lot depends upon how we come out of this pandemic and when we can resume travel and distancing. We will keep you informed as things develop.

As you know, the International Council Executive Board has confirmed there will be a convention July 15-19, 2020 in Grapevine, Texas. We are looking forward to seeing everyone and getting those ESA hugs. You will find lots of this information in this Lamplighter. Sandy Alexander, IC Special Projects Chair, has provided info for the Thursday night Trivia and the 50/50 raffle. With the new 50/50 raffle you do not need to be present to win. Everyone has an opportunity to participate and win.

I hope you all are staying safe and healthy! While we can't get together, we can still call and write notes/cards/emails or ZOOM with all our ESA friends.

*Lou Ann*

A COVID Stay at Home Message:

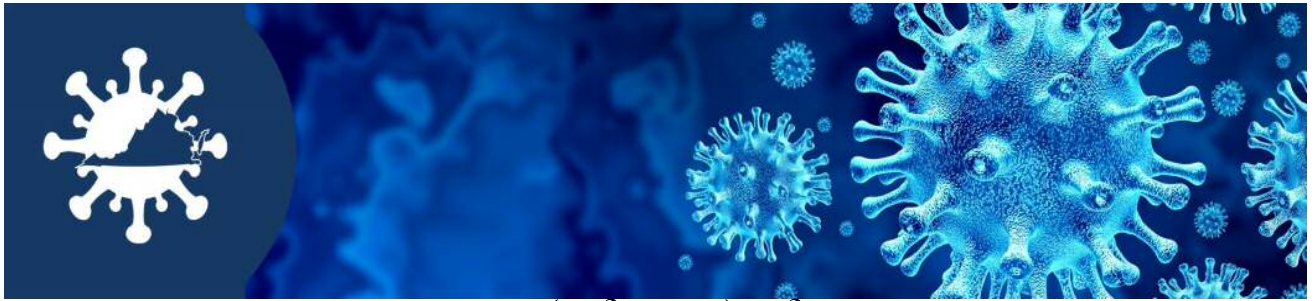
**Be Positive, Stay Negative**



At the 2019 Convention: Lou Ann Wyer, Brenda Bowersox, Diane McLane, Tammy James, Brenda Orebaugh, Mindy Boyd, Marie LaDuke, Deborah Langfitt

### **Executive Board:**

**President:** Lou Ann Wyer  
**1st Vice Pres:** Brenda Bowersox;  
**2nd Vice Pres:** Diane McLane;  
**Rec. Secretary:** Brenda Orebaugh;  
**Corr. Sec:** Tammy James;  
**Treasurer:** Mindy Boyd;  
**Parliamentarian:** Marie LaDuke  
**Jr Past President:** Debbie Langfitt



*Coronavirus (COVID-19) in Virginia*

The COVID 19 Pandemic has affected everyone. With “Stay at home”, we are unable to meet, so many calendar events have been affected. Options for getting together “virtually” include phone calls, emails, Zoom, which includes the ability to hear and see each other, and others. This ability to interact with each other has been a critical factor in making it through the pandemic. This section was originally “Dates to Remember “ — It’s more “Fly by the Seat of our Pants” as things are constantly changing. Our President, Lou Ann, has done a fantastic job changing direction and leading us through this tough time

**March 14, 2020**



VSC Spring Meeting

**May 15-17, 2020**

ESA Virginia State Council Conference



Chapter Meetings



and events



Dream Homes





*Dates to Remember:*

These events are still a go, at this time.

**July 15 -- 19, 2020**

ESA International Convention

Embassy Suites by Hilton – DFW Airport North

Grapevine, TX

[Epsilonsigmaalpha.org/icconvention](http://Epsilonsigmaalpha.org/icconvention)



TBD VSC Leadership and Council Meeting  
and “Mini Convention”

**November 5 – 7, 2020**

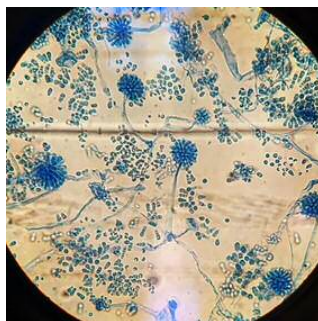
SERC Conference

Kissimmee, FL

The Delta Hotels by Marriott

Rate is \$95.00 plus \$15.00 resort fee

Conference registration is \$120.00



What is this?





## COVID 19

We probably all have whined a bit since this Stay at Home order. We can't move freely around as we wish, we can't hug our family members, and we can't go to our favorite restaurants and shops. Whenever I get down about being alone, I stop and think about the reasons why we are doing this, and I get an immediate attitude adjustment! I am so thankful and proud of all the healthcare professionals and essential workers that are risking their lives every day. Let's remember them in our prayers each day.

Loving God,  
we place into your care  
all our doctors, nurses and  
healthcare workers.  
Give them courage of heart  
and strength of mind and  
body.  
Keep them safe from harm.  
May they know  
our deep gratitude  
for all they are doing to heal  
and help those affected by  
the coronavirus.  
God of all consolation  
may they know your  
protection  
and peace.  
Bless them in these  
challenging days  
and bless their families.  
Amen.



@dublindiocese



*Coffee Chats with Charlotte Mondays at 11:00 am EST*

Charlotte Carloni has been holding Coffee Chats every Monday morning via Zoom. I see several of you have been able to attend.



On March 30<sup>th</sup> Rich Peterson from ALSAC gave us an update. He indicated that about 1200 ALSAC employees are working from home. Some still are working at the Call Center. Many non-essential employees from St. Jude are working at home as well. The campus is on lock-down which means no visitors, no vendors or business partners are able to enter the hospital. If anyone has any questions for Rich, he can be contacted at [rich.peterson@stjude.org](mailto:rich.peterson@stjude.org). We also heard a message from Rick Shadyac. [Click for Rick's message.](#)

On April 6<sup>th</sup>, we talked about practicing gratitude. Charlotte discussed keeping a journal by your bed and writing down a few things each day that you're grateful for. Practicing gratitude helps us focus on the good things going on in our lives and keeps us happy, positive, and thankful for what we have.

Read more in-depth about why practicing gratitude is such a powerful action and ways you can practice it in your own life: <http://www.skilledatlife.com/how-to-practice-gratitude-and-why/>

Members also provided some good books to read during our Stay-at Home orders:

- Where the Crawdads Sing – Delia Owens
- Before I Let You Go – Kelly Rimmer
- Longmire series – Craig Johnson
- The Shack – William P Young
- The Marriage Lie – Kimberly Belle
- The Lost Girls of Paris – Pam Jenoff
- Louise Penny series (MN is doing a book club with these books, great idea!)
- Sold on a Monday – Kristina McMorris
- Before We Were Yours – Lisa Wingate
- Nora Roberts: Year One, Of Blood and Bone, The Rise of Magicks
- Irene Hannan series- first book is Buried Secrets
- Embraced by Lysa Terkeurst (devotionals)

Members provided their TV Show Recommendations:

- Killing Eve
- Justified
- Schitts Creek



## *Coffee Chat: Continued*

On April 13<sup>th</sup>, I had to cancel at the last minute as a horrific storm was passing through Virginia Beach and I was without power. Charlotte had planned for me to give a virtual tour of my garden. I worked all day the weekend prior to make sure it was just the way I wanted it. Well, so much for best laid plans..... The winds blew through my neighborhood and broke trees, blew over my fence and put a hole in my roof. I am grateful that my house did not suffer any major damage. So today I had a team of 8 brave men from a tree service cut the damaged trees (without hitting my roof) and clean up my entire yard of debris. They did a great job and my anxiety has gone down just a bit. Next, the roof and fence!



Here is what the Coffee Chat covered:

They talked about the importance of creating a schedule and arranging our days to keep our bodies and minds active, whether we are currently working or not. Here are some ideas. Every day do something:

- For your body (take a walk, yoga, healthy meals)
- For your mind (read a book, do a puzzle, research something you're interested in)
- To beautify your surroundings (garden, tidy up the house, rearrange the junk drawer)
- For others (pick up the phone and check in on a friend/family member, chat with friends on Facebook, send a letter, drop cookies off on a neighbor's porch)
- That makes you happy (work on a craft, watch your favorite movie, have a glass of wine )

Remember the importance of sticking to a routine (start by setting an alarm to wake up in the morning). Keep your "to-do" list somewhere visible and cross tasks off as you achieve them. Remember that everyone is reacting differently to the circumstances we have been dealt and to take care of yourselves physically and mentally.

A special thanks to Mary DeRey (MI) for sharing about the "SKIP for Kids" project that she and her chapter volunteers and makes items for. Here is the link: [www.skipforkids.org](http://www.skipforkids.org), and Mary's email address is [mderey@comcast.net](mailto:mderey@comcast.net) if you'd like to ask her questions.



[www.epsilonsigmaalpha.org](http://www.epsilonsigmaalpha.org)



### *Coffee Chat continued and St Jude*

And here is the information shared by Jenni Russ (IN) about the Read-a-Loud program that she is volunteering for with students in her local school district. Jenni has been recording herself reading books – consider reaching out to your teacher friends and asking if they need any “guest readers” for virtual learning! Here is a link for more information regarding the rules from publishers and how to share: <https://www.schoollibraryjournal.com/?detailStory=publishers-adapt-policies-to-help-educators-coronavirus-covid19>. If you have questions you can contact Jenni: [jandruss@sbcglobal.net](mailto:jandruss@sbcglobal.net)

I hope you can join one of the calls sometime. They are fun and informative. Charlotte also said she was hoping to hold one in the evening so those that work during the day can participate.

*Lou Ann*



*Beautiful Clematis, before the storm*



**St. Jude Children's Research Hospital** Finding cures. Saving children.

Link to register for the St. Jude Volunteer Management System – this is a great way to learn about volunteer opportunities in your area and for ALSAC regions to be able to contact you, as an ESA member and loyal St. Jude supporter, to help spread the mission of St. Jude. Be sure to note that you are a part of the ESA national team when registering and share this link with your chapter members so they can register too: [www.stjude.org/volunteer](http://www.stjude.org/volunteer)

Registration for the St. Jude Walk/Run is now open! Create your team and send the registration link to your chapter members, friends, family and neighbors to have them sign up to walk with you. Remember, ESA has a \$75,000 fundraising goal, so please consider fundraising along with any volunteering you may do at your local walk. When registering be sure to select ESA from the National Teams pulldown:

<https://www.stjude.org/get-involved/fitness-fundraisers/5k-walk-run.html>





*Kaitlin Burket— ALSAC/St. Jude*

An email message from Kaitlin Burket dated 4/7/2020: (some of you may have received this)

Good Afternoon Partners,

I hope you and your loved ones are staying safe, active, and healthy during these unprecedented times.

Our CEO, Rick Shadyac, has stressed to all of us at ALSAC/St. Jude that during these challenging times it is important that we stay focused on the goodness we see everywhere. To be inspired. And to inspire others. With that in mind, we have launched a new blog series - "Inspired by Your Kindness" - on our digital storytelling platform St. Jude Inspire.

As a member of our St. Jude family, we wanted you to be one of the first to know about Inspired by Your Kindness. If you are looking for a simple way to support our mission right now, we'd ask you to read it every day, take it to heart, and please consider sharing these stories through your own networks like Facebook, Twitter, Instagram, LinkedIn and/or email. I hope that you will agree that this is who we are, and it's the message we want to convey to the world: **Together, nothing is impossible.** One of the first of stories in "Inspired by Your Kindness" highlights members of the St. Jude Educator Ambassador Network who are finding cool, creative ways to keep their students learning and engaged. Another mentions the children's book "We're going on a Bear Hunt" and how people are placing stuffed animals in their front windows for kids to spot when they go on walks with their parents. There are many others and new entries are being posted daily.

Please let me know your feedback and if you know of any acts of kindness that you think are worthy of being shared in this series and be sure to tag us on your social media pages (@StJudeVirginia) and/or use the hashtag #ForStJude

Thank you for all you do,

-Kaitlin

**Kaitlin Burket, MPA**

Regional Development Director, Field Development - Virginia  
ALSAC – The fundraising and awareness organization for  
St. Jude Children's Research Hospital®  
300 E. Main Street, Suite 300, Norfolk, VA 23510  
[kaitlin.burket@stjude.org](mailto:kaitlin.burket@stjude.org)

o: 757.687.1200 c: 757.408.2772

**Finding cures. Saving children.®**



## *1st Vice President - Brenda Bowersox*

At the time of this writing, the IC Convention in Grapevine, TX is still scheduled. The deadline for registering has been moved from May 1 until June 1 and the form on the IC website has been updated with that information. I have my fingers crossed....

**IC Challenge:** The 2020 IC Challenge: Journey Around the World will take you to places unknown as we travel the world visiting St. Jude's international clinics. Whether you are in first class or coach we promise the flight attendants will cater to your every need and the flight will be smooth. Be prepared to sit back, relax, and enjoy your "Journey Around the World" ...without ever leaving Texas! This will happen on Friday the 17<sup>th</sup>.

There are three levels:

\$200 level – You will qualify to participate in the 2020 IC Challenge and will receive an event T-shirt.

\$500 level - You will qualify to participate in the 2020 IC Challenge, enjoy your event T-shirt and receive a special \$500 level prize.

\$1000 level – You will join in the event, receive your event T-shirt, and earn both the special \$500 level prize and an additional \$1000 level prize along with "First Class" status for the flight complete with the perks.

The registration form for this can be found on the IC Convention page as well as other forms such as Trivia Night and the Tours.

**Tours:** There are two tours planned:

Monday, July 13 from 2:00 – 9:00 pm is the WinStar World Casino. Price is \$30 and includes the 90 minute bus drive. This is billed as the world's largest casino.

Friday, July 17 from 6:00 – 11:30 pm is a Texas Rangers baseball game. Price is \$70 which includes your bus ride and an all you can eat meal.





## *1st Vice President - Brenda Bowersox*

**IC Slate of Officers:** This is the slate of officers for IC 2020-21:

President	LeAnn Wray	Michigan
1 <sup>st</sup> Vice President	Robin Bussey	South Carolina
2 <sup>nd</sup> Vice President	Denise Holdaway	Arkansas
Recording Secretary	Mary Humphrey	Colorado
	Gail Marchant	Georgia
Corresponding Secretary	Linda Schmidt	Kansas
Treasurer	Brenda Myers	Ohio
	Lynda Edwards	Alabama
Parliamentarian	Chris York	Oregon
	Celeste Webb	Illinois
Workshop Coordinator	Malinda Remington	Florida
	Jaycee Peak	Indiana
Jr. Past President	Teri Olson	Minnesota

All of the candidate's qualifications will be in the next Journey issue. LeAnn's theme is

***Embrace the Journey with ESA.***

Her special projects for the year will be Hope for Heroes with an emphasis on Folds of Honor and Disabled American Veterans.



**VSC Slate of Officers:** The VSC 2020-21 slate of officers were emailed to the chapter presidents on April 13. I have received emails from some of the chapters with their approval. The executive board will be following up when all chapters have replied. Thank you for your willingness to do things a little different as we navigate this new world.

If you have any questions please don't hesitate to call or email me.

*Brenda Bowersox*



## *2nd Vice President—Diane McLane*

I was very disappointed that we had to cancel the Spring meeting and Convention. I was looking forward to both and the opportunity to visit with everyone. I always have more energy from being with everyone. With “Stay at Home” orders, I’ve learned about Zoom and other “TeleHealth” tools for having meetings and appointments online. Zoom has been used for the “Coffee Chat” with Charlotte. It’s been used for an Executive Board meeting for a brief discussion of the ByLaw/Standing Rules changes.

We have now added 6 new members, 1 for Alpha Omega and 5 for Beta Kappa. Congratulations to both chapters, you’ve set an example for all of us.

I have been in contact with Omega Psi (Va Tech), they still want to meet to learn about the community chapters. I’ll contact them in the fall.

I’m looking forward to seeing y’all at the Leadership conference this fall. Take care and stay safe.

I’d like to recognize my Brother-in-law,  
Dr. Randy Pokomo,  
an ER Physician in Los Angeles, CA.  
He’s our Hero! And we pray that he  
stays healthy.

Diane McLane



## Founder's Day Looks Different This Year...

I received an email from Tracy Swanson, ESA Headquarters Membership Director; She shared some ideas and opportunities. Please review and take some time to go to the indicated sites. We’ve been an organization for 91 years, in that time we’ve adapted to the times in order to keep this wonderful group going. Did you imagine our being able to communicate in so many ways while on “Stay at Home” because of the Pandemic? Please explore the following items.

## Join in the Facebook Fun on May 1

All members are invited to follow ESA's official page on Facebook and contribute to our national Founder's Day conversation on May 1, check it out and share about ESA's role in YOUR life on this special day.

[ESA on Facebook](#)





*2nd Vice President—Diane McLane*

## Renew old friendships

Many of us are enjoying rekindling some old friendships via social media, kind of the silver lining in these strange times. While everyone is connecting via technology these days, try encouraging your members to seize the moment to reach out to someone who used to be a part of ESA and refresh those friendships. Maybe it will lead to them feeling welcome to come back to ESA and rejoin when things settle down.

If you reconnect with someone far away interested in coming back to ESA, just use the /Recommend page on the website so ESA HQ can help connect them to the closest members to them.

[Recommend someone for ESA](#)

## Resources

- ESA's new website page, "ESA Life" has projects, tech tools/tips, recipes, book and show recommendations -- all kinds of good stuff to enjoy, check it out and encourage your chapters to do the same.
- You can also join [ESA's "Membership Ideas" Facebook group](#) and invite FB ESA friends as well.
- Would you like to talk about how to keep everyone engaged as we work our way back to normal? [ESA Membership Director Tracy Swanson](#) has phone appointments available daily to brainstorm and idea swap, schedule your session today.

[Visit ESA's new "ESA Life" page on the website](#)

## Tell Us Why ESA is Important to You!

Each year ESA holds a "what ESA means to me" essay contest. You can enter whether you have been a member for 5 minutes or 50 years. You may enter in one of two categories, for members less than one year or for members more than one year. First second and third places are awarded in each category at IC Convention each year. **Please submit your essay to headquarters no later than May 31.** Requirements are on the next page. For more information on Language guidelines, please see the ESA Brand Guide.

<https://www.epsilonsigmaalpha.org/ESAToMe>



*2nd Vice President—Diane McLane*

## What ESA means to me (continued)

**Please submit your essay to headquarters no later than May 31.**

Requirements:

- Must be typed and double spaced
- NO MORE THAN 300 words
- Please do not use "Sisters" or "Sorority", ESA is a co-ed organization
- ESA will be counted as one word and Epsilon Sigma Alpha will be counted as three words
- When submitting your essay please include your category, name, date pledged, chapter name and number (if applicable), city and state
- You may submit your essay by mail or by email to [esainfo@epsilonsigmaalpha.org](mailto:esainfo@epsilonsigmaalpha.org)

<https://www.epsilonsigmaalpha.org/ESAToMe>



*Recording Secretary—Brenda Orebaugh*

I miss seeing all of you! Staying home is not for me. I am now working from home 3 days a week. They closed our office on March 23. My Granddaughter had planned to stay with me that week because they had spring break. She is still with me. Her teachers email homework each Monday and it is due each Friday. School being closed is so sad for me. Prom was scheduled for May 2 and graduation was scheduled for May 16. At this time, we don't know if there will be a graduation ceremony. •

I know in my heart what we are doing by staying in to help prevent more of a widespread of the Coronavirus is the right thing to do but it sure is hard for me. I miss being around friends.

My friend/buddy Beverley brings me goodies and leaves them on my porch. Easter Sunday, she left orange scones and sugar cookies that looked too pretty to eat. So, so delicious and of course nonfattening• .

Until we meet again, take care and be safe - wear those masks if you must go out.



### *Corresponding Secretary—Tammy James*

Spring is here. I hope everyone is doing well and managing to keep a positive attitude during these catastrophic times. I must say how much I enjoy Beverley's inspirational emails. I always smile and feel less stressed after "visiting" with Beverley as she shares her adventures with all of us. I love her baking photos and wish I lived closer to her so that I could sample all her creations.

Larry and I have reopened our She Shed but haven't been able to enjoy it too much due to the pollen. And due to COVID-19 I have not been able to sip wine with Lou Ann in the garden or visit Peggy Smith at Beth Sholom. I miss my gardening friends and our trips to various nurseries in Virginia Beach. On the bright side flowers and trees are blooming and the beautiful scenery really does help cheer me up.

I am still working, as our company manufactures parts for the military and numerous defense contractors. Blessings to all and looking forward to seeing everyone at the VSC Fall Meeting.



Beautiful!



### *Treasurer—Mindy Boyd*

I hope this issue of the Lamplighter finds all members safe and healthy. I am privileged to report that all 17 chapters are in good standings as all dues were paid promptly and on time. Thanks to all who sent monies to support our budget since we were unable to meet in March. Lucky numbers raised \$230.00. Our treasury looks good for the new upcoming year. I am currently working on the budget and will submit to our committee within the next few weeks, then to you the membership for approval.



The Money Tree plant



*Parliamentarian—Marie LaDuke*

I am quite sure that none of us ever thought we would be in the situation we are experiencing today. And what is even worse, we don't know when or how it will end. I do hope all of you are staying safe and are healthy and doing your part in the grand scheme of things. I have had every vacation/trip that I had planned cancelled which has been very disappointing although I understand necessary. So far we and our family are healthy. I have learned how to use an Instant Pot and have been in my kitchen a lot more than usual. I am back to baking my sandwich bread, discovered a Honey Whole Wheat Sunflower bread that makes the best toast and have tried lots of new recipes. Most have been keepers.

I want to thank all Virginia chapters for responding to my request to read the VSC Proposed Bylaws & Standing Rules and Awards and Recognitions Guidelines that I emailed every chapter and that Lou Ann also included in her last newsletter. I got your feedback and compiled the results. I am including these results for all Virginia members to see. The number of votes is based on the number of members in each chapter plus the officers votes. So everyone had the opportunity to cast their vote(s). I will email the results to all Chapter Presidents. I will update the VSC Bylaws & Standing Rules and Awards and Recognitions Guidelines and send them to the incoming VSC Corresponding Secretary and VSC Chapters for your reference.

I don't know when our paths will cross again but I really do look forward to that day. We will have a lot to talk about and appreciate being together again.



*Jr Past President Debbie Langfitt*

Hi to all of MY ESA SISTERS and BROTHERS,

It is with excitement that I write this. I know how giving you are, yet I am still continuously surprised at the generosity. As the due date arrived for the Disaster Donations my mail started to fill with checks. You are a special group. I was so proud to send over \$1200.00 to Kim Kummer from Virginia.

I have been in a confused state with the change of routine in my life. It has been a blessing to have David home teleworking and not driving into D.C. or traveling to Europe. I worried before this Virus, I would be a basket case if he were stuck over there.

I have been working trying to finish a blanket I started 3 years ago and am making great progress. It was to be something for my youngest granddaughter. She turns 4 next week. I am a little late. It makes me happy to turn off the news and bury my mind in a handsewn craft. I hope each of you have found something that gives you a happy moment during the current events.

I hope to see you soon!

Stay safe!



# Parliamentarian—Marie LaDuke

## Voting Results for 2019-2020 Proposed Bylaws & Standing Rules Changes & VSC Awards and Recognitions Guidelines

### Proposed Bylaws Changes

	In Favor	Opposed
Article VIII Meetings, Section 1	27	2
Article XII Appointed Officers and Standing Committees, Section 3 f SERC Director	27	2
Article XII Appointed Officers and Standing Committees, Section j Historian	27	2
Article XII Appointed Officers and Standing Committees, Section o Scrapbook Keeper	27	2
Article XII Appointed Officers and Standing Committees, Section 3 g Disaster Fund Chairman	27	2
Article VIII Meetings, Section 5	29	
Article VI Duties of Officers, Section 9	29	
Article X The Executive Board, Section 4	29	
Article XII Appointed Officers and Standing Committees, Section r The Workshop Coordinator	29	
Article XII Appointed Officers and Standing Committees, Section 1 n Publicity Director	29	
Article XII Appointed Officers and Standing Committees, Section 3 b The Budget Committee	29	
Article XIII Finance, Section 1	28	1
Article III Members, Section 5	29	
Article XII Appointed Officers and Standing Committees, Section 3 e Audio/Visual Tech	29	
General revisions in grammar	29	

### Proposed Standing Rules Changes

Section 1 g	29	
-------------	----	--

### Proposed VSC Awards and Recognitions Guidelines

Section 1 and A	29	
Section II, J	29	
Section III, J	29	

### Officer Votes

### Total Chapter Votes

### Total Votes

7	
22	
29	

Marie LaDuke

VSC Parliamentarian 2019-2020



## *NEW MEMBERS*



# EΣA

## Alpha Omega

- Cheryl Spurr

## Beta Kappa

- Tess Dancause
- Elaine Hilton
- Larry James
- Joy Mills
- Maya Nixon

Welcome new pledges!!



*ESA For St Jude—Carol Campbell*

# St Jude Reporter Checking In



Thank You for All Your Work for St Jude this past year! I'm working with HQ to make sure events and money were received.

\$\$\$\$\$

Send checks to headquarters for events, memorials or "In Honor of". Do not send directly to hospital, if you want credit for your chapter!!!

The Form to be used is included in this News bulletin. Keep copies on hand. You never know when you might need one or two.

\$\$\$\$\$\$\$\$\$\$\$



~ O ~

**Mackeigan Wuest** Adm @ESA HQ

created the following poll on Facebook:

- How are you planning to participate in the St. Jude Walk/Run in 2020?
  - Raise money and volunteer at my local event
  - Raise money in a virtual campaign
  - Volunteer at my local event
  - Attend my local event to raise awareness among my friends and family
  - Raise money and walk/run in my local event

- Check out TEAM ESA on Facebook

- **RED ESA Volunteer Aprons**

Back by POPULAR Demand

~~~\$25 EACH

- READ YOUR NEW Journey Magazine Share Yours and Read On Line!
- Prayers for Your Safety During the COVID 19 Pandemic

~ O ~

NOT TOO EARLY TO FORM YOUR ESA TEAM FOR THE SEPTEMBER WALK/RUN FOR THE CURE IN DC, RICHMOND AND TIDEWATER AREA—SIGN UP NOW!



### *Chaplain — Beverley Wright*

Well we are all aware that we are in the middle of a pandemic – one which is very scary and non-discriminant. All we can do is PRAY – so I'm going to leave it at that!

At some point, WE WILL get back together and we will want to pay homage to the ESA sisters who passed this past year. Since we are all 'safe at home' please take this time to sit down, write a short eulogy/remembrance of your sister, and be prepared to share it sometime down the road.

It has AGAIN been my pleasure serving as VSC Chaplain. I think after 4 times, I can retire having told you all my little life stories, shared family recipes, and just bringing you into my everyday life – as exciting? as it can be from time to time.

Please support the next VSC Chaplain with your kind words of encouragement as you have me!



Have you been sewing masks while following the Stay at Home Orders? If so, Charlotte would like to know how much our ESA members are doing to help out during this time of need.

Please send me the following by **May 5th**:

Your Name

Your Chapter

How many masks you have made through April 30th (estimate if you don't know exactly)

Recipients of those masks (hospitals, nursing homes, etc, other)

Thanks, Lou Ann



### *State Project— Teresa Morris, Judy Williams*

We want to sincerely thank all chapters that have had a project to support the VSC State Project and sent in contributions! We are very proud of what the VA Membership continues to do to support ASK & Special Love!

Since we were unable to attend convention this year, We have decided not to continue with the Quilt Raffle, but will save them for next year, if the chairman would like to promote. We will announce totals at a later date.

Respectfully,

Theresa Morris, Judy Williams





## *ESA Foundation—Sue Foy*

### IMPORTANT FOUNDATION NEWS

We can look forward to a new year after the virus. It may be a different way we do things and sometimes it is a good change that comes about after a disaster.

We are still working on the Foundation activities. Because of the uncertainty of the IC Convention, the ESA Foundation is being proactive and will be using electronic ballots this year.

As the state counselor, I have been tasked to collect all current active members of the Foundation email addresses before May 25, 2020. I need your full name and address, membership number (if you know it) in the body of the email. I will compile all of our contacts and submit to the State Counselors' Chair Ann and she will get them all to headquarters for them to update the system. If your chapter has a vote, I need the email address of the person responsible for casting the chapter vote.

If you do not have an email address, decide who you would want to be your proxy and have them send me their email address with your information and we will update the contact information.

**THERE WILL BE NO PAPER BALLOTS AT IC.**

If you are reading this article, are a paid member (by February 29, 2020) of the Foundation and have not gotten an email from Beth Sherron, please email her at [bethsherron@verizon.net](mailto:bethsherron@verizon.net)

After headquarters has a chance to update their system, an email will be sent to each entity (individual, chapter, state or business) from headquarters on June 22, 2020 for you to submit your vote by midnight Mountain time on June 29, 2020.

In other news- Thanks to all who are members of the Foundation and sent in their membership dues for this year. We have five (5) new LIFE ACTIVE members this year. We will receive \$100 for each two (2) new life active members before July 1, 2020. We will use this to further the Foundation. The Life Active Membership program adds funds to the grant programs including the \$50,000 pledged to the partnership grant with St. Jude Graduate School of Biomedical Sciences.

You can still send in your annual membership money even though you won't be able to vote this year, you will be ready for next year.

Stay well and thank you for caring about the Foundation.

*Hope for Heroes—Ginny Hatchell*

When I think of our military personnel, my immediate thought goes to overseas and out-to-sea operations.

What we have seen in this last month is what they do here, in the United States, at home.

When the Comfort pulled in to New York Harbor, I stopped what I was doing to watch. The New York skyline. The Statute of Liberty. I had a combination of fear and hope. As I watch our military personnel help, in every state, doing whatever needs to be done to protect our citizens, I am encouraged.





*SERC — Finance Susan Caldwell, Marie LaDuke*

**SERC FINANCE PROJECT**

**CHANGES, CHANGES, CHANGES!**

**What's new?**

No need to donate gift cards  
Amazing prizes!!

**What can you win?**

Prizes

Holiday Mesh Wreath—Pictured--Made by Beverley Wright  
Patriotic Mesh Wreath—Pictured--Made by Marie La Duke  
St. Jude Quilt—Pictured--Made by Beth Sherron  
50/50 Drawing

**How does it work?**

Purchase lots of tickets to win—Remember you're not donating a gift card!  
SERC members, family, friends, work associates, etc. are eligible to purchase tickets—No need to be present to win  
All prices included on the Flyer  
Sales before the SERC Conference  
Mail cash or checks to Tammy Gregg, SERC Treasurer, using the form  
Send cash or checks and the form by someone who will attend the Conference  
Sales at the Conference  
Susan and Marie will have prizes on display and ticket sales at tables set up at the:  
Registration area  
Friday Night Welcome Party  
During breaks on Saturday  
Saturday Night Installation Banquet

Susan Caldwell and Marie La Duke,  
SERC Finance Co-chairs





## *SERC Finance*

### SERC Finance Item #1 of 3

Dimensions approximately  
26 inches x 7  $\frac{1}{2}$  inches.  
Poly deco mesh weatherproof  
ribbon with fabric wired ribbon  
accents. Metal Merry Christmas  
sign in the middle. Colors red,  
green, white and a touch of tan.



Get ready to decorate inside your house or on your covered porch front door for Christmas with this beautiful handmade wreath. Purchase your tickets by sending the number you want and the monies to the SERC Treasurer Tammy Gregg, 1328 Hunts Bridge Road, Easley, SC 29640.

Tickets are 1 for \$6, 2 for \$10, or 6 for \$20.

Tickets may be purchased from now through the SERC Conference 2020. Mail in your request to Tammy or bring or send in cash with someone attending the Conference.

SERC Finance Committee Co chairs: Susan Caldwell & Marie LaDuke

Questions? - Email Susan at [susancaldwellva@comcast.net](mailto:susancaldwellva@comcast.net)

Marie at [marieladuke@comcast.net](mailto:marieladuke@comcast.net)



*SERC Finance*SERC Finance Item #2 of 3

Dimensions approximately  
26 inches x 7 ½ inches.  
Poly deco mesh ribbon with  
fabric ribbon and stars ac-  
cents.  
Patriotic colors of red, white  
and blue.



Get ready to decorate inside your house or on your covered porch front door for the 4<sup>th</sup> of July with this beautiful handmade wreath. Purchase your tickets by sending the number you want and the monies to the SERC Treasurer Tammy Gregg, 1328 Hunts Bridge Road, Easley, SC 29640.

Tickets are 1 for \$6, 2 for \$10, or 6 for \$20.

Tickets may be purchased from now through the SERC Conference 2020. Mail in your request to Tammy or bring or send in cash with someone attending the Conference.

SERC Finance Committee Co chairs: Susan Caldwell & Marie LaDuke

Questions? - Email Susan at [susancaldwellva@comcast.net](mailto:susancaldwellva@comcast.net)

Marie at [marieladuke@comcast.net](mailto:marieladuke@comcast.net)

*SERC Finance*

SERC Finance Item  
#3 of 3







## *Alpha Xi, Norfolk*

Mildred Edwards was recognized by St. Jude Children's Research Hospital—Virginia. Alpha Xi and all ESA Virginia are very proud of her:

Happy Volunteer Week! This week is special because we celebrate the amazing work, dedication, and commitment of our local volunteers...including Mildred Edwards.

Mildred has volunteered with her Epsilon Sigma Alpha (ESA) sisters since 1973...that's 47 years! In fact, she was introduced to the mission of St. Jude through Danny Thomas when he spoke at the ESA National Convention.

She has participated in many St. Jude events including the Hampton Roads St. Jude Dream Home Giveaway,...in fact... all 20 of them! She is the Open House guru and embodies the Danny Thomas famous and inspirational quote: "Success in life has nothing to do with what you gain in life or accomplish for yourself. It's what you do for others."

THANK YOU MILDRED FOR ALL YOU DO FOR THE KIDS OF ST. JUDE...we are grateful for you!

[#ForStJude](#) [#nationalvolunteerweek](#) [#togethernothingisimpossible](#)





## *Alpha Omega Winchester*

It is sad we cannot get together and are facing cancellations of so many activities. I mentioned our Jan. 4 meeting with the speaker from the Parkinson's Disease support groups. Our 1970 member Betsy Whitehead was taken to Skyline Terrace in Woodstock on March 9th. Her husband has not been able to visit because of their lockdown and her disease has progressed to the point of needing help. 89-year old Patsy O'Connell, who rushed me in 1964 while she was president of Alpha Omega, is also in lockdown in a local Rehab facility after breaking bones in a fall. It is so hard to not be there for those who need us.

Our February program was so interesting because we heard the new ideas for the sheltered workshop we have supported for 49 years. A new lady is their CEO and has great ideas to help, especially finding jobs for the autistic people who now comprise 50% of those they are helping. They are starting a Legacy diner (postponed at present) to encourage annual donation to N. W. Works, Inc.

We did well with our country ham sandwich sale the 27th of February and sent the money to the Lord Fairfax Community College for their scholarship. We also sent \$50.00 to our Disaster Fund and the State Project received \$ 500.00.

On March 7 we held our last meeting at the Laurel Center, a home for the abused where the chapter donated \$ 250.00 along with other individual checks. We had a wonderful explanation of all that is done there (individual apts.) to help these suffering individuals as well as their children. There is a separate building for children's activities and snacks are provided. (We brought along lots of snacks to donate.) The main housing and meeting rooms are on lockdown and individual passes are given to the residents there. Following the talk we had a tour of the 4- floor facility. Our stay at home policy now is affecting these people tremendously. The abuse continues.

On March 8 we had a final wonderful social in Berryville at the Tea Room called the Tea Cart. There were hats you could wear, wonderful displays of teapots and other items along with a full-size replica of Queen Elizabeth and beautiful chandeliers. We were served a choice of teapots with different flavored teas and a 3-tiered bunch of treats to enjoy for several people. Unfortunately, we were forced to cancel our April 4 meeting and April 9 Birthday Social which involved 6 of our birthdays. In the fall we had a Birthday social for members with October, November and December birthdays. We are all missing getting together and I feel so sad for VSC president Lou Ann and her Beta Kappa sisters who had planned our May 15 convention. We will stay strong and be grateful for ESA in our lives.

*Jane Parrish*



## *Beta Kappa, Virginia Beach*



Beta Kappa VB might be social distancing but we are not social forgetting!

Picture for our postal worker,  
hearts for the essential personnel,  
cookies for ER workers at a local hospital, and  
homemade masks for loved ones on the front line.  
Every little act of kindness goes a long way





## *Beta Omícron, Staunton*

Well, with this “social distancing” Beta Omicron has been keeping the distance so not much has been accomplished. Thank goodness for e –mail. In our chapter, we have all felt the loss of our dear Sister Gayle Meeks. She touched us all with her leadership and experiences in ESA and her generosity to her community. We have been trying to fill the void, reorganize our chapter and remember her in our good works. We know all are trying to stay positive until it is safe to resume life again. We are getting in touch by e-mail and phone. As was State Convention, one of our yearly “Ways & Means” projects was cancelled. We did fulfill our yearly obligations and paid our dues so to keep in good standing. We continue to shop and assemble care packages for the local cancer center for patients to help make them feel more comfortable and thought of.

With “ESA Founder’s Day” May 1<sup>st</sup> right around the corner and Virginia on lockdown/stay-at-home status until May 15<sup>th</sup> plus that may not occur for some Chapters. Not sure what everyone is doing to stay sane but the grocery store is a good hang-out, so of course food, pounds, etc. go along with that!! Spring has sprung in the Valley and the beauty has been very uplifting. Our Beta Omicron Sister Betty is beginning to get relief from her shoulder surgery and catching up on reading and thanks to Sister Jackie for stepping up to serve as our President for the remainder of the year.

Palm Sunday and Easter Sunday have been very different, but area Churches have come together and brought the message to the community in a number of ways. This gives us hope for the world, families, friends, and more understanding to move on and survive the coming months. Beta Omicron hopes this finds each of you in good spirits and ready to have a great summer once this pandemic passes.

Submitted by: Jane Harris Beta Omicron

E-Mail: [janeharris@mgwnet.com](mailto:janeharris@mgwnet.com)



## *Beta Sigma—Richmond*

Sent all chapter donations.

Enjoyed our “Souper” Bowl social.

Everyone bravely tasted new foods from San Francisco and Kansas City

Dream Home campaign is up and running.

Sees the best in all our members adjusting to the new “normal”.

Open to new technology (to most of us) by having a virtual meeting!

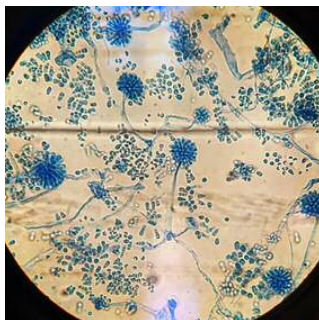
Found strength in each other.

Had a successful Trivia Night for the VSC State Project.

Outstanding leadership during this difficult time from our Chapter President.

Possible alternative socials at a later date.

Each member prays for the safety of our sister, families, and nation.



What is this?

It is Covid 19, as seen under the microscope in the microbiology laboratory



## *Beta Tau, Woodbridge*

When I ended my last Lamplighter Article, I said we hope to see many of our VSC sisters at the Spring VSC Meeting. Needless to say, that didn't happen and there won't be a convention, so hopefully sometime in the future we will meet one another again.

At our February 10<sup>th</sup> business meeting Vice President, Edna did an "ESA Scope" which was a quiz about ESA and Beta Tau. I don't think any of us passed it but it refreshed our memory. We also exchanged Valentines and candy.

Beta Tau's big news for this issue was our 50<sup>th</sup> Anniversary Party held on February 15, 2020. All the Executive Board was invited and we were pleased to have Lou Ann Wyer, President; Diane McLean, 2<sup>nd</sup> Vice President; Mindy Boyd, Treasurer; Tammy James, Corresponding Secretary; and Marie LaDuke, Parliamentarian accept our invitation. Their traveling companions were Eveleen Harrison, Susan Caldwell and P'Nut Schools. Former Beta Tau members who attended were Gloria Payne, Cindy Medvick and Pat Holtsclaw. Pat's husband Jim came as well as Bill Gibbons. We did a High Tea which involved making a lot of small sandwiches and cookies and keeping the tea pots full of hot water. We were certainly pleased with the attendance.



Back row left to right: Tammy James, Eveleen Harrison  
Diane McLean, Mindy Boyd, Seated left to right:  
P'Nut Schools, Bill Gibbons, Susan Caldwell,  
Lou Ann Wyer and Marie LaDuke



Front left to right: Pat Holtsclaw,  
Edna Plancon, Middle: Sandy Ree  
Doris Hood. Back row: Gloria  
Payne, Cindy Medvick and  
Phyllis Porch

On March 1<sup>st</sup> we went to see "Grease" and the Riverside Dinner Theater. It certainly brought back high school memories for us old folks. When the DJ was playing our songs we could sing along.



*Beta Tau, Woodbridge*



Cathy Wickline, Edna Plancon, Sandy Reed and Doris Hood

On March 6<sup>th</sup> Doris, Sandy and Pat Hoover answered the telephones at the WFLS Country Cares Radiothon for St. Jude Children's Research Hospital. The chapter has been doing this for years and we get a lot of satisfaction in doing our part.



Cathy Wickline, Edna Plancon, Sandy Reed and Doris Hood

March 9<sup>th</sup> was our Business Meeting held at Doris' home. Pat Hoover gave an educational on how to control household pests with natural ingredients rather than using bug spray. Our officer slate for 2020-2021 was presented.

The pandemic struck Virginia the following week so our April business meeting and installation have been postponed. Who knows when the chapter will meet again, but hopefully maybe late May or early June.

Hope to see our VSC sisters sometime in the future, but at least we are all in this together.

Sandy Reed



*Delta Kappa, Roanoke*

It seems it has been a long time since getting together and we have not been able to do much with the chapter. Brenda is still taking treatment and doing a good job with keeping up. Pat tried to put a Christmas Tub up and fell off the ladder, did not break anything but badly beat up. I have promised my kids to stay off ladders but cheat sometimes and hold on tight.

We were looking forward to working on the Dream House but that is in a hold pattern and Easter we really miss being able to hide eggs with the kids. My fun time even to hide from the adults and watch them shoving each other out of the way. They never know which egg I put the \$5.00 in. Looks like next year will not come soon enough.

Carol is stuck in Kentucky being shut in as are the rest of us. She went to Kentucky after her surgery because she wanted to be there for her granddaughter's 16<sup>th</sup> birthday. I have tried not to bake so much, but have neighbors that love the goodies and they have been a great help to my kids so they do not have to drop groceries on my front porch so often. I have been so lucky to have people that want to bring me things and make sure I stay in the house or yard. It is lonesome to be alone and shut in but Zoom has been great for me to see the little ones.

All the jonquils have bloomed and gone, now the iris are peaking their heads out with the peonies and all the other color in the yard.

I am sure we will be headed out to eat, we sure love that and I miss going to the senior day at the movies. Brenda, Pat and I have been going and enjoy being there, hopefully that can happen again soon. We still keep up with clipping coupons and that reminds me I have a stack to clip and get in the mail soon. I look forward to Beverley's message every day, just wish I was in neighborhood to get in on all her goodies.

Until we can get together, keep safe and well.

Elaine Prillaman





*Gamma Pi, Staunton*

I know everyone is going to be sharing how they are faring during this COVID-19 pandemic, so why not???? Joe, Amanda, and I are staying home, with the exception of going out for FOOD! We are watching a lot of Netflix and Amazon Prime movies and series – but not together! Our taste in this type of entertainment is a polar opposite from one another so thank goodness there are multiple televisions! I have been reading a lot, baking a whole lot, walking through the neighborhood and making wreaths! Amanda is watching TV with me and we ensure she gets up and about to exercise every day to keep everything moving!

Brenda and Jim and Precious (doggie) have been doing about the same, with the exception of baking and wreath making!!! Brenda's granddaughter has been keeping them company so that is so nice and makes the disappointments with not having a 'normal' graduation a little easier to bear – but not much!

Before all of this started, Brenda and I were able to participate in an indoor yard sale at the Gypsy Hill Park Gym and the profits went to St. Jude. Everything else we had planned unfortunately had to be cancelled but we are keeping in touch by phone, text, and email. WE CAN NOT WAIT TO SEE EVERYONE AGAIN! LOTS OF LOVE AND HUGS!

Beverley, Brenda, & Amanda





*Sigma Chi, Roanoke*

What a beautiful Spring this has turned out to be; hard to believe we have a tree left standing after all the rain and high winds we've experienced. What a blessing that we are still standing!

The coronavirus has certainly stifled interaction between us. We were looking forward to the VSC Convention. Now we look forward to a walk in the park.

We are blessed with a resident artist who happens to be a Master Gardener. Her name is Jo Reedy and many of you know her artwork from past conventions.

Well, Jo doesn't sit idle easily and decided her yard was her next project. I must share this picture since I was so intrigued when she was talking about her "blue" tree. Her explanation: "I needed to have something to do."

Sigma Chi sisters also needed to have something to do. Most of us found plenty of time to eat. We have taken advantage of electronics and social media to stay in touch. We look forward to rejoining our Easterseals kids and shoppers at the Discovery Shop. This will be our second year to support a St. Jude Dream Home.

Lynn Keffer





## Theta Mu, Richmond

Theta Mu held a combined Super bowl party and regular meeting in February where we selected officers for next year. We had a delightful evening with other ESA members and neighbors at Beta Sigma's Trivia event. Our table won first place inching out the second place team by 1 point. It was so much fun.

Just like you, we are following the 'Stay at Home' orders. We have kept in contact with each other using phone calls and email. Some of the chapter had used Zoom to attend Sunday services and others had used it for ESA Executive board meetings. Almost all of us had used various virtual applications for doctors appointments. So when Eveleen's son told her what his kids and wife were doing for entertainment that night, she had a brainstorm. Why not do a Theta Mu social/themed meeting using Zoom. Diane set up the meeting for April 24th at 6:30 pm. It was a Mexican Party — dress up in something around the house that seemed a bit Mexican — have Mexican food, either homemade or delivered. We invited President, Lou Ann to Join us. Members were greeted with "Buenos tardes mi chicas." (*Good afternoon my friends.*). We also counted to 10 in Spanish.

As shown below, we had a lineup of 6. We had a wonderful time catching up and enjoyed spending the time "together". As I looked at the screen prints I did, I couldn't help thinking, If we'd had 3 more people, we would have had Hollywood Squares!



Eveleen in her costume made from an old gardening hat and placemats temporarily stitched together. She looked great! Some of the others had tequila bottles or Corona beer to add to the Mexican theme.



L-R Top: Eveleen Harrison, Diane McLane, Betty Cochrane  
L-R Bottom: Lou Ann Wyer, Dot Brown, Nicole Lewis



*Welcome to my garden. Spring has sprung!*



Crocus, Jonquils, Columbine (my sister's), Clematis, Lentin roses, Wild Violets, Roses, Peony, Salvia, Lavender Sage, Geranium, Carolina Jasmine, Azaleas, Hosta, Lilac. Bleeding Hearts





*Editor's Note—Diane McLane DianeESA@VA@gmail.com*

It has been my pleasure to produce *The Lamplighter* this year. Your participation is key to having a meaningful news bulletin. I appreciate everyone who sent in materials to be included. It makes everything interesting.

This is the last issue of *The Lamplighter* for 2019—2020. I'm a little sad to be handing the reins to the next editor. I've enjoyed (and hated, when the unexpected happens in Publisher) putting together this year's publication.

I hope you've enjoyed the flower pictures I've scattered throughout. I enjoy taking the pictures and seeing the new growth each year. I was looking out the window today and noticed the contrast in colors between the Lilac which has had leaves for a while, and the crepe myrtle which has just started putting out leaves. I can see where the "spring green" in crayons got it's name for the light lemon-green color.

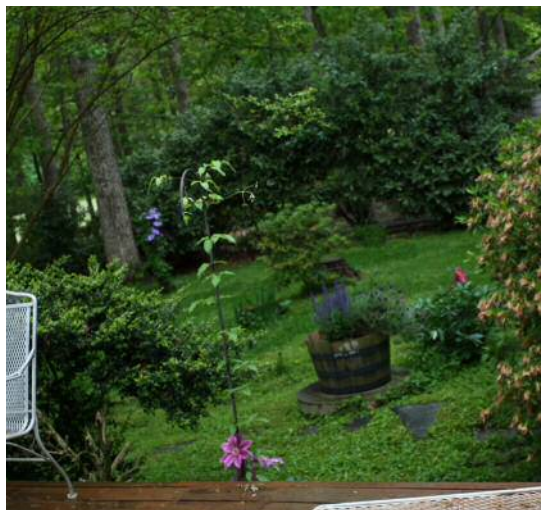
My job is done, for this year anyway, I think I'll get a cup of tea and enjoy the view out the back. Stay well and enjoy *The Lamplighter*.



Clematis



Peony



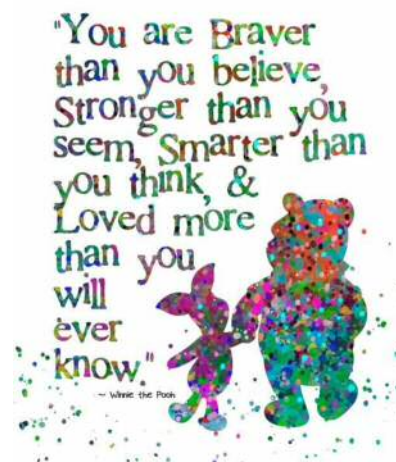
The view out my side back door



Clematis



Salvia and  
lavender sage







# International Council Convention - July 15-19, 2020

**"TEXAS... WHERE IT ALL BEGAN"**

EMBASSY SUITES BY HILTON DFW AIRPORT NORTH

2401 Bass Pro Drive, Grapevine, TX 76051 (972) 724-2600



MEMBER NAME \_\_\_\_\_ MEMBER NUMBER/STATE \_\_\_\_\_ /  
 ADDRESS \_\_\_\_\_  
 CITY, STATE, ZIP \_\_\_\_\_  
 PHONE \_\_\_\_\_ CELL \_\_\_\_\_ EMAIL \_\_\_\_\_  
 CHAPTER NAME \_\_\_\_\_ CHAPTER # \_\_\_\_\_ STATE COUNCIL \_\_\_\_\_  
 DATE OF ARRIVAL \_\_\_\_\_ TIME OF ARRIVAL \_\_\_\_\_ FLY/ DRIVE USING SCOOTER Y/N  
 ROOMMATE(S) \_\_\_\_\_

## CHECK ALL THAT APPLY

First IC Convention Pledge ELAN Collegiate Member - Campus \_\_\_\_\_ HQ Staff

ESA Foundation Board IC Elected/Appointed Board Past IC President (year) \_\_\_\_\_

2019-2020 State President - State \_\_\_\_\_ 2020-2021 State President - State \_\_\_\_\_

Previous State President - State(s)/Year(s) \_\_\_\_\_ Served with: \_\_\_\_\_

I will be recognized at convention for my years of ESA Service: 25 30 35 40 45 50 55 60 65 70 (Please circle)

Medical Food Allergy: The hotel will do its best to accommodate **MEDICAL Food Allergy** requests only.

Allergy alert for \_\_\_\_\_ (Additional costs may apply.)

## CIRCLE AMOUNT

|                                                                                            |                                                        |       |
|--------------------------------------------------------------------------------------------|--------------------------------------------------------|-------|
| <b>MEMBER FULL REGISTRATION FEE:</b>                                                       | Postmarked by June 1, 2020.....                        | \$250 |
| Includes general assemblies, workshops,<br>welcome party, recognition luncheon and banquet | Postmarked June 2 - June 15, 2020.....                 | \$275 |
|                                                                                            | After June 15, 2020 (see payment note on page 2) ..... | \$275 |
| <b>MEMBER FRI &amp; SAT REGISTRATION FEE:</b>                                              | Postmarked by June 1, 2020.....                        | \$225 |
| Includes general assemblies, recognition<br>luncheon and banquet                           | Postmarked June 2 - June 15, 2020.....                 | \$250 |
|                                                                                            | After June 15, 2020 (see payment note on page 2) ..... | \$250 |
| <b>MEMBER SAT REGISTRATION FEE:</b>                                                        | Postmarked by June 1, 2020.....                        | \$125 |
| Includes general assembly and banquet                                                      | Postmarked June 2 - June 15, 2020.....                 | \$150 |
|                                                                                            | After June 15, 2020 (see payment note on page 2) ..... | \$150 |

## MEMBER/NON-MEMBER WALK-IN REGISTRATION

**FEE: Includes everything in full registration** See payment note..... \$300

**PICP NO-HOST LUNCHEON (all past and present state presidents/IC presidents)** .....\$40

If served with multiple presidents, indicate with whom you wish to sit? \_\_\_\_\_

**SUBTOTAL MEMBER REGISTRATION:** \$ \_\_\_\_\_

**Convention Hotel Room Rates - Available July 10, 2020 through July 21, 2020**  
**Single/Double \$169 plus tax King \$159 plus tax Premium Suite \$289 plus tax**  
 \$10 for each additional person in room over 2

To reserve room rates, you **MUST** make reservations by June 20, 2020  
 Call 800-999-4127 and reference booking code **LON** or click the following hotel link:

[https://embassysuites.hilton.com/en/es/groups/personalized/D/DALEMES-LON-20200710/index.jhtml?WT.mc\\_id=POG](https://embassysuites.hilton.com/en/es/groups/personalized/D/DALEMES-LON-20200710/index.jhtml?WT.mc_id=POG)

Member Name and Number as listed on first page \_\_\_\_\_

**MEMBER MAY NOT REGISTER AS NON-MEMBER FOR ANY EVENT**

(Circle one) MEMBER/NON-MEMBER NAME \_\_\_\_\_

Please indicate if special guest of the following:                      ALSAC                      EASTER SEALS

INCOMING IC PRESIDENT                      OTHER (Please specify) \_\_\_\_\_

|                                                  | <u>CIRCLE AMOUNT</u>                                    |
|--------------------------------------------------|---------------------------------------------------------|
| <b>MEMBER/NON-MEMBER FULL REGISTRATION FEE</b>   | Postmarked by June 1, 2020 ..... \$250                  |
| Includes general assemblies, workshops,          | Postmarked June 2 – June 15, 2020..... \$275            |
| welcome party, recognition luncheon and banquet  | After June 15, 2020 (see payment note below)..... \$275 |
| <b>NON-MEMBER attending WELCOME PARTY</b>        | Postmarked by June 1, 2020 .....\$ 65                   |
|                                                  | After June 1, 2020 (see payment note below) .....\$ 70  |
| <b>NON-MEMBER attending RECOGNITION LUNCHEON</b> | Postmarked by June 1, 2020.....\$ 50                    |
|                                                  | After June 1, 2020 (see payment note below) .....\$ 55  |
| <b>NON-MEMBER attending BANQUET</b>              | Postmarked by June 1, 2020.....\$ 75                    |
|                                                  | After June 1, 2020 (see payment note below) .....\$ 80  |
| <b>YOUTH (10-17) REGISTRATION FEE</b>            | Postmarked by June 1, 2020.....\$165                    |
| Includes general assemblies, welcome party,      | Postmarked June 2 – June 15, 2020.....\$175             |
| recognition luncheon and banquet                 | After June 15, 2020 (see payment note below).....\$175  |
| <b>CHILD (UNDER 10) REGISTRATION FEE</b>         | .....\$125                                              |
| Same activities as Youth with child's meals      |                                                         |

.....  
\*\*List food allergies for  
non-members on page one,  
indicating who has the allergy.  
.....

**TOTAL PAGE 2 REGISTRATION:**                      \$ \_\_\_\_\_  
**ENTER TOTAL FROM FIRST PAGE:**                      \$ \_\_\_\_\_  
**TOTAL REGISTRATION:**                      \$ \_\_\_\_\_

**MEN'S GOLF . . . Indicate days you would like to play golf. Please complete golf info sheet on website.**

I wish to golf:   ☐ Monday   ☐ Tuesday   ☐ Wednesday   ☐ Thursday   ☐ Friday   ☐ Saturday

**SELECT ONE PAYMENT TYPE**

**\*\*PAYMENT NOTE:** Payment after June 15, 2020 must be paid by **MONEY ORDER, CERTIFIED CHECK OR CREDIT CARD AND MAILED TO THE IC CONVENTION TREASURER BEFORE JUNE 20, 2020.** After June 20, 2020, mail registration form only – **DO NOT SEND PAYMENT.** Email the IC Convention Treasurer that the form has been mailed and bring copy of registration form with money order, certified check, cash or credit card to the IC Convention.

☐ Check   ☐ Money Order                      Make payable to: **ESA IC 2020 Convention**

A \$45 fee will be assessed for any returned check.

☐ Credit card\*\*\*                      \_\_\_ Visa                      \_\_\_ MasterCard                      \_\_\_ American Express                      \_\_\_ Discover

\*\*\*A fee of 4.5% of the total charge will be added.

Credit Card # \_\_\_\_\_ Exp. Date \_\_\_\_\_ Security code \_\_\_\_\_

Name EXACTLY as it appears on credit card \_\_\_\_\_

Billing address of credit card holder \_\_\_\_\_

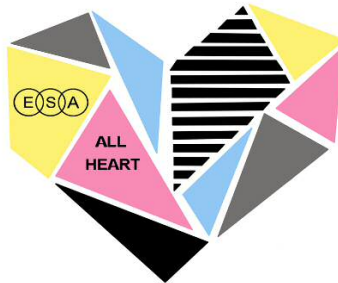
Cardholder Signature (required) \_\_\_\_\_

**CANCELLATION:** If you find it necessary to cancel this registration, the full amount less a \$15 processing fee will be refunded when **WRITTEN** cancellation is postmarked **NO LATER THAN JUNE 15, 2020. NO REFUNDS AFTER JUNE 15.**

**Mail registration form with payment to: IC Convention Treasurer - Teresa Stewart, #1 Louis Circle, Andrews, TX 79714                      (432) 664-5625                      [terresa@mustangenergy.biz](mailto:terresa@mustangenergy.biz)**



## *Fundraising Raffle for the International Council in 2020*



### Instructions for the 2020 50/50 Raffle :

- We are holding a 50/50 Auction in 2020 at the Trivia Night on July 16 at the International Convention in Grapevine Texas.
- There will be Three (3) Prizes this year from the 50/50 Raffle. The 1<sup>st</sup> Prize will be 25% of the total ticket sales, the 2<sup>nd</sup> Prize will be 15% of the total ticket sales, and 3<sup>rd</sup> Prize will be 10% of the total ticket sales.
- We have made the change to encourage a greater level of participation by all members and to expand the opportunity to win.
- The ticket price has been greatly reduced to \$5.00 per ticket, and if you purchase 4 you will get one free or 5 for \$20.00.
- All tickets need to be returned to Sandy Alexander before IC Convention if you are not attending in person or at IC Convention before the Thursday Evening event.

Please print the front page (ticket page) and then flip your paper and print the back page with Sandy's address. Return the portion of the ticket that had the buyers name, address and phone number. Let them keep the section of the ticket that gives the details of the drawing. If you are receiving a check for the ticket price, please have the check made out to:

### **ESA IC Council**

**All tickets and payments are to be returned to: Sandy Alexander, 16450 N 164<sup>th</sup> Dr  
Surprise, AZ 85388 If you should have any questions, please reach out to Sandy through  
text at: 303-278-7675 or e-mail at [sandy.alexander6697@gmail.com](mailto:sandy.alexander6697@gmail.com)**

**Epsilon Sigma Alpha International  
2020 - 50/50 Auction**



Prizes will be awarded on July 16, 2020  
at ESA IC Convention in Grapevine, Texas

**Cost : \$5 per ticket or 5 Tickets for \$20**

1<sup>st</sup> Prize – 25%, 2<sup>nd</sup> Prize-15%, and 3<sup>rd</sup> Prize – 10%

*"Thank you for supporting your  
International Council Board"*

Name: \_\_\_\_\_

Address: \_\_\_\_\_

Phone number: \_\_\_\_\_

\$5 per ticket or 5 Tickets for \$20

**"50/50 Raffle" – Three Chances to win;** 1<sup>st</sup> prize 25%, 2<sup>nd</sup> prize 15%,  
3<sup>rd</sup> prize 10% of total tickets sold. Drawing will be held on July  
16, 2020 at the ESA IC Convention in Grapevine Texas

**Epsilon Sigma Alpha International  
2020 - 50/50 Auction**



Prizes will be awarded on July 16, 2020  
at ESA IC Convention in Grapevine, Texas

**Cost : \$5 per ticket or 5 Tickets for \$20**

1<sup>st</sup> Prize – 25%, 2<sup>nd</sup> Prize-15%, and 3<sup>rd</sup> Prize – 10%

*"Thank you for supporting your  
International Council Board"*

Name: \_\_\_\_\_

Address: \_\_\_\_\_

Phone number: \_\_\_\_\_

\$5 per ticket or 5 Tickets for \$20

**"50/50 Raffle" – Three Chances to win;** 1<sup>st</sup> prize 25%, 2<sup>nd</sup> prize 15%,  
3<sup>rd</sup> prize 10% of total tickets sold. Drawing will be held on July  
16, 2020 at the ESA IC Convention in Grapevine Texas

**Epsilon Sigma Alpha International  
2020 - 50/50 Auction**



Prizes will be awarded on July 16, 2020  
at ESA IC Convention in Grapevine, Texas

**Cost : \$5 per ticket or 5 Tickets for \$20**

1<sup>st</sup> Prize – 25%, 2<sup>nd</sup> Prize-15%, and 3<sup>rd</sup> Prize – 10%

*"Thank you for supporting your  
International Council Board"*

Name: \_\_\_\_\_

Address: \_\_\_\_\_

Phone number: \_\_\_\_\_

\$5 per ticket or 5 Tickets for \$20

**"50/50 Raffle" – Three Chances to win;** 1<sup>st</sup> prize 25%, 2<sup>nd</sup> prize 15%,  
3<sup>rd</sup> prize 10% of total tickets sold. Drawing will be held on July  
16, 2020 at the ESA IC Convention in Grapevine Texas

**Epsilon Sigma Alpha International  
2020 - 50/50 Auction**



Prizes will be awarded on July 16, 2020  
at ESA IC Convention in Grapevine, Texas

**Cost : \$5 per ticket or 5 Tickets for \$20**

1<sup>st</sup> Prize – 25%, 2<sup>nd</sup> Prize-15%, and 3<sup>rd</sup> Prize – 10%

*"Thank you for supporting your  
International Council Board"*

Name: \_\_\_\_\_

Address: \_\_\_\_\_

Phone number: \_\_\_\_\_

\$5 per ticket or 5 Tickets for \$20

**"50/50 Raffle" – Three Chances to win;** 1<sup>st</sup> prize 25%, 2<sup>nd</sup> prize 15%,  
3<sup>rd</sup> prize 10% of total tickets sold. Drawing will be held on July  
16, 2020 at the ESA IC Convention in Grapevine Texas

**Epsilon Sigma Alpha International  
2020 - 50/50 Auction**



Prizes will be awarded on July 16, 2020  
at ESA IC Convention in Grapevine, Texas

**Cost : \$5 per ticket or 5 Tickets for \$20**

1<sup>st</sup> Prize – 25%, 2<sup>nd</sup> Prize-15%, and 3<sup>rd</sup> Prize – 10%

*"Thank you for supporting your  
International Council Board"*

Name: \_\_\_\_\_

Address: \_\_\_\_\_

Phone number: \_\_\_\_\_

\$5 per ticket or 5 Tickets for \$20

**"50/50 Raffle" – Three Chances to win;** 1<sup>st</sup> prize 25%, 2<sup>nd</sup> prize 15%,  
3<sup>rd</sup> prize 10% of total tickets sold. Drawing will be held on July  
16, 2020 at the ESA IC Convention in Grapevine Texas

***Please send this ticket and payment to:***

***Sandy Alexander***  
16450 N 164<sup>th</sup> Dr  
Surprise, AZ 85388

***Please send this ticket and payment to:***

***Sandy Alexander***  
16450 N 164<sup>th</sup> Dr  
Surprise, AZ 85388

***Please send this ticket and payment to:***

***Sandy Alexander***  
16450 N 164<sup>th</sup> Dr  
Surprise, AZ 85388

***Please send this ticket and payment to:***

Sandy Alexander  
16450 N 164<sup>th</sup> Dr  
Surprise, AZ 85388

***Please send this ticket and payment to:***

***Sandy Alexander***  
16450 N 164<sup>th</sup> Dr  
Surprise, AZ 85388

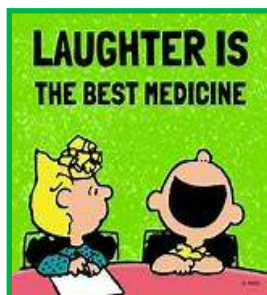




# TRIVIA



Sponsored by ESA International Council



New challenges offered  
throughout the event;  
Fun Prizes awarded  
throughout the night!

\$30 / PERSON  
(10 Player Maximum Per Team  
SORRY—NO SPECTATORS!!

THURSDAY, JULY 16, 2020  
IC CONVENTION  
EMBASSY SUITES—DFW AIRPORT NORTH  
GRAPEVINE, TEXAS  
DOORS OPEN AT 6:30PM  
QUESTIONS START AT 7:00PM SHARP

Come check out  
the fun changes  
planned this  
year, more op-  
portunities to  
WIN a prize!!

Single Players en-  
couraged to sign  
up for this event!  
We'll get you on a  
team of FUN Trivia  
Players—you will  
have a blast!

GRAND PRIZE  
WINNING TEAM  
AWARDED  
\$1,000

Each Table Can Buy:  
ONE STAR FOR \$10 — USED TO  
DOUBLE THE SCORE EARNED FOR  
ONE ROUND DURING THE NIGHT  
UP TO 10 MULLIGANS FOR \$1  
EACH — ONE USED PER ROUND  
TO CANCEL OUT A WRONG/  
DOUBTFUL/BLANK ANSWER

CONTACT  
Sandy Alexander  
16450 N 164th Drive  
Surprise, AZ 85388  
303-278-7675  
sandy.alexander6697@gmail.com



# TRIVIA

Sponsored by ESA International Council

THURSDAY, JULY 16, 2020  
IC CONVENTION  
EMBASSY SUITES—DFW AIRPORT NORTH  
GRAPEVINE, TEXAS

NAME: \_\_\_\_\_

ADDRESS: \_\_\_\_\_

CITY/STATE/ZIP: \_\_\_\_\_

PHONE: \_\_\_\_\_ EMAIL: \_\_\_\_\_

**\$30 / PERSON (10 PERSON MAXIMUM PER TEAM)**

If you are paying for more than yourself, please list the other people:

\_\_\_\_\_  
\_\_\_\_\_  
\_\_\_\_\_  
\_\_\_\_\_  
\_\_\_\_\_

\_\_\_\_\_  
\_\_\_\_\_  
\_\_\_\_\_  
\_\_\_\_\_  
\_\_\_\_\_



**MAKE CHECKS PAYABLE TO: INTERNATIONAL COUNCIL ESA**

**Mail Form and Money To:**

Sandy Alexander  
16450 N 164th Drive  
Surprise, AZ 85388

Amount  
Enclosed: \_\_\_\_\_

**PLEASE CHECK ONE:**

- ☐ Yes, I have a team formed  
☐ No, I do not have a team yet,  
but will have one by IC Convention  
☐ No, I do not have a team, will you help me  
find a team



EPSILON SIGMA ALPHA



## 2020 ASSOCIATION OF THE ARTS ENTRY FORM

"...Where It All Began" July 15-19, 2020

Embassy Suites by Hilton – DFW Airport North - Grapevine, Texas

Artists Name: (please Print) \_\_\_\_\_

City, State and Zip: \_\_\_\_\_

Chapter Name, Number, State Council: \_\_\_\_\_

Phone and E-mail: \_\_\_\_\_

**ONLY ONE ENTRY PER DIVISION PER MEMBER IS ALLOWED.**

### Division I – Visual Arts

- \_\_\_\_ Oil Paintings or Acrylics
- \_\_\_\_ Drawings, Pastel, Pencil or Charcoal
- \_\_\_\_ Watercolors
- \_\_\_\_ Sculpture
- \_\_\_\_ Pottery (hand formed or wheel thrown)

**# of Entries in Division**

### Division II – Photography

- \_\_\_\_ Black & White or Color Photos
- \_\_\_\_ Graphic Design
- \_\_\_\_ Computer Assisted Design

**# of Entries in Division**

### Division III – Crafts (Painted Art)

- \_\_\_\_ Tole Painting
- \_\_\_\_ Painted Pottery
- \_\_\_\_ China Painting
- \_\_\_\_ Porcelain
- \_\_\_\_ Calligraphy (matted for display)
- \_\_\_\_ Fabric Painting

**# of Entries in Division**

### Division IV – Crafts (Mixed Media)

- \_\_\_\_ Jewelry
- \_\_\_\_ Rubber Stamping
- \_\_\_\_ Decoupage
- \_\_\_\_ Glass
- \_\_\_\_ Wood
- \_\_\_\_ Floral arrangements
- \_\_\_\_ Other (soap, candle, paper making, baskets, etc)

**# of Entries in Division**

### Division V – Needlework (fibers)

- \_\_\_\_ Crewel
- \_\_\_\_ Embroidery/Hardanger/Silk Ribbon
- \_\_\_\_ Counted Cross Stitch
- \_\_\_\_ Needlepoint
- \_\_\_\_ Knitting
- \_\_\_\_ Crochet
- \_\_\_\_ Cloth Weaving
- \_\_\_\_ Latch Hooking
- \_\_\_\_ Stuffed Animals
- \_\_\_\_ Sewing

**# of Entries in Division**

### Division VI – Quilting

**# of Entries in Division**

### Division VII – Holiday (Ornaments or Decorations)

Please Describe Entry

**# of Entries in Division**

### Division VIII – Presidential Division

Bring any art showing ESA Love dealing with her theme



**# of Entries in Division**

**PLEASE SEND COMPLETED FORM BY JUNE 15, 2020 TO: \*\***

**BILLYE PETERSON PUTNAM  
1401 PEMBROKE DR  
EDMOND, OK 73003**

You are responsible for getting your entries to IC in Grapevine, TX. Please check if you will be bringing your entry or sending it with someone else. Please identify who you are sending it with.

\_\_\_\_ I WILL BE BRINGING MY ENTRY

\_\_\_\_ I WILL BE SENDING MY ENTRY

**\*\* Review schedule for check in and pickup times.**

**\_\_\_\_ TOTAL # OF ENTRIES SUBMITTED**

# ST. JUDE DONATION FORM



*Please returned to the ESA for St. Jude Office accompanying donation.*  
Make checks payable to: St. Jude Children's Research Hospital.

## Instructions:

All information is necessary to process this form. Additional copies are available at  
[www.epsilonsigmaalpha.org](http://www.epsilonsigmaalpha.org)

## Individual Donation

Name of Donor: \_\_\_\_\_ Member Number: \_\_\_\_\_

Address: \_\_\_\_\_

City/State/Zip: \_\_\_\_\_

## Chapter Donation

Chapter(s) Donating:

| CHAPTER # | CHAPTER NAME | PERCENTAGE OF CREDIT |
|-----------|--------------|----------------------|
| _____     | _____        | _____                |
| _____     | _____        | _____                |

TOTAL AMOUNT

\$ \_\_\_\_\_

☐ In Memory of \_\_\_\_\_

☐ In Honor of \_\_\_\_\_

☐ Donation Only

Send memorial/honorarium card to:

Name: \_\_\_\_\_ Address: \_\_\_\_\_

City/State/Zip: \_\_\_\_\_

☐ To help save on administrative costs, it is not necessary to send any thank you letters from the  
ESA for St. Jude office.

**ESA for St. Jude Office:** 363 W. Drake Rd. • Ft. Collins, CO 80526  
970.223.2824 • Fax: 970.223.4456 • E-mail: [esainfo@epsilonsigmaalpha.org](mailto:esainfo@epsilonsigmaalpha.org)



# SERC CONFERENCE 2020

## "FLOCK TO FLORIDA"

**November 6 -7, 2020**

**Grand Orlando Resort @ Celebration  
(aka Delta by Marriott Orlando Resort)**

**Member Name:** \_\_\_\_\_ **Guest Name:** \_\_\_\_\_

**Address:** \_\_\_\_\_ **City:** \_\_\_\_\_ **State:** \_\_\_\_\_

**Phone #:** \_\_\_\_\_ **E-Mail:** \_\_\_\_\_

**State Council:** \_\_\_\_\_ **Chapter name & number:** \_\_\_\_\_

**Check all that apply:**

☐ **SERC Elected Board**, ☐ **SERC Appointed Board**, ☐ **SERCHETTE**,  
☐ **State President**, ☐ **IC Elected Board**, ☐ **IC Appointed Board**, ☐ **PICPA**  
☐ **Foundation Board**, ☐ **New Member (pledge)**, ☐ **1<sup>st</sup> Time Attendee**,  
☐ **Other (Please specify)** \_\_\_\_\_

### **CONVENTION REGISTRATION:**

|                                                                      |          |          |
|----------------------------------------------------------------------|----------|----------|
| <input type="checkbox"/> Full Member Registration (thru 10/17/2020)  | \$120.00 | \$ _____ |
| <input type="checkbox"/> Full Member Registration (after 10/17/2020) | \$135.00 | \$ _____ |
| <input type="checkbox"/> Full Guest Registration (thru 10/17/2020)   | \$110.00 | \$ _____ |
| <input type="checkbox"/> Full Guest Registration (after 10/17/2020)  | \$115.00 | \$ _____ |

**TOTAL ENCLOSED \$** \_\_\_\_\_

*Please note any Dietary Restrictions:* \_\_\_\_\_

### **Payment Information:**

- \*A \$25 fee will be assessed for any returned check.
- \*Registration after 10/17/2020 must be cash or cashier's check
- \*Registration cancellation must be in writing & received by 10/17/2020
- \*A \$5 processing fee will be retained for all cancellations.

**Make check payable to: SERC CONFERENCE 2020–Total Enclosed \$ \_\_\_\_\_ Check # \_\_\_\_\_**

**Mail to: Joy Lehnert, 14545 Sawgrass Dr, Clermont, FL 34711, Joy.lehnert@yahoo.com**

**HOTEL: Grand Orlando Resort at Celebration – 2900 Parkway Blvd, Kissimmee, FL 34747, ROOM RATE:\$95.00 PLUS \$15 resort fee & tax. To make RESERVATION: 1-800-634-4774 identify yourself as member of group – 1020EPSIGM Cut-off date for hotel – OCTOBER 12, 2020. Please see hotel info sheet.**



## **HOTEL INFORMATION for Epsilon Sigma Alpha SERC Conference November 6-7 2020:**



The Grand Orlando Resort at Celebration is currently being refreshed, refurbished and rebranded and will become the all new “**Delta by Marriott Orlando Resort**”. The address: 2900 Parkway Blvd, Kissimmee, FL 34747, which is only 1½ miles from the Walt Disney World complex and about ½ mile from the Disney community of Celebration. A center point of the property is two large freeform pools, waterslide, waterfalls and 2 whirlpools.

### **Sleeping Room Reservation**

Each individual guest must make his or her own reservation by calling 1-800-634-4774 no later than the **Cutoff Date set by the Hotel for Sleeping Rooms of October 12, 2020**. Guests making such reservations must identify themselves as **members of Epsilon Sigma Alpha SERC Conference**, with reservation # **1020EPSIGM**. All reservations must be guaranteed with a major credit card. If a guest does not cancel a reservation prior to 24 hours before 4pm on the guest’s check-in date, then Hotel may charge the credit card one night’s room fee plus any applicable taxes. Cost - \$95.00 PLUS \$15.00 resort fee and taxes. Parking is complimentary. (Rates are good 3 days pre and post conference dates)

SERC Finance Ticket Purchasing Form

Name \_\_\_\_\_

State \_\_\_\_\_

Email address \_\_\_\_\_

Item Number \_\_\_\_\_

Number of Tickets \_\_\_\_\_

**Tickets are 1 for \$6, 2 for \$10 and 6 for \$20.**

Please complete this form and mail it and your check payable to SERC to:

**SERC Treasurer Tammy Gregg  
1328 Hunts Bridge Road  
Easley, SC 29640**